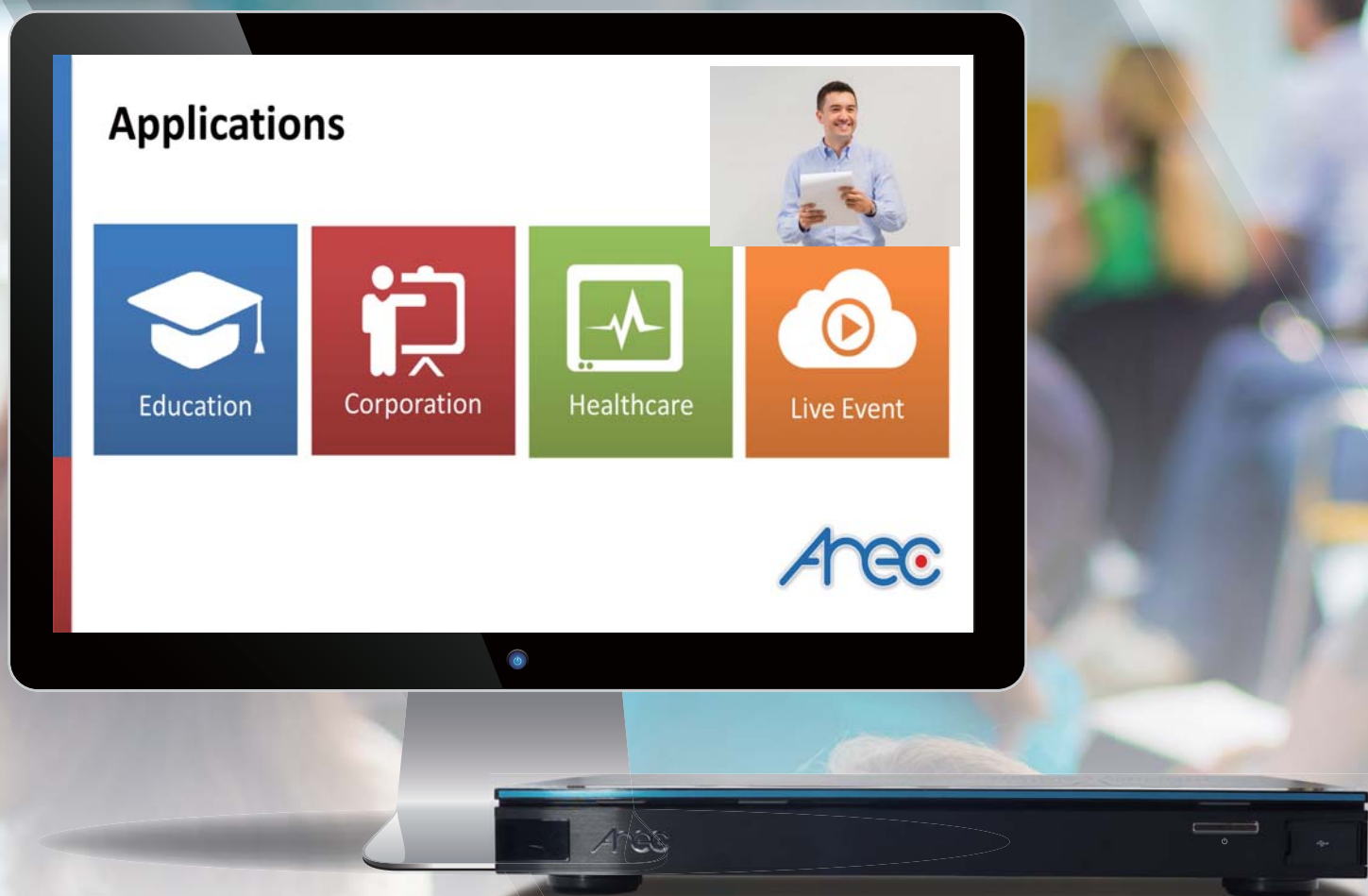


AREC KS-2 Media Station



For Video Mixing, Switching, Live Broadcasting and Recording

- Simultaneous Live Streaming and Recording
- 2 Video Sources Mixing, Switching and Live Streaming
- Standalone Design, Reliable and Easy-to-Use
- Ideal Live Broadcasting Device for Teaching, Presentations, Events or Training

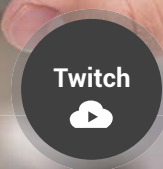
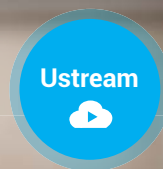
Everyone Has a Story to Share AREC Makes It Easier Than Ever



AREC KS-2 is a standalone, live streaming and recording station that allows you to capture, mix, switch, live stream and record 2-channel video simultaneously. With easy-to-use and 2-channel mixing/ streaming features, AREC KS-2 makes broadcasting live video more interesting and useful than ever.

Simultaneous Live Streaming and Recording

AREC KS-2 can stream live video while simultaneously recording to a USB external storage. With 2-channel sources streaming feature, users can broadcast an HD quality on-going lecture/event to an enterprise streaming server or live streaming website, such as YouTube and Twitch, allowing viewers to attend at any location through the Internet.



Supports 2 Video Sources Mixing, Streaming, and Recording

AREC KS-2 supports synchronized 2 video capturing through HDMI and VGA, as well as DVI and Component via optional adapter. Audio recording is supported through 3.5mm stereo jacks and HDMI.





Flexible 2-Channel-In and 3-Channel Video Files Design

KS-2 supports 2-channel video capturing and up to 3-channel synchronized video recording. The 3-channel files include 1 mixed or switched video file and 2 individual video sources for flexible using or post-production editing.

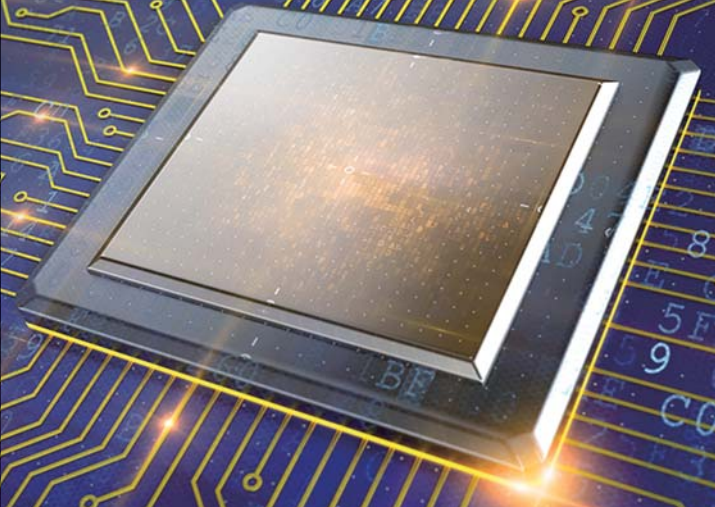
Video Management Platform

Built-in video management platform. Administrators or teachers can manage lecture videos stored in local machine remotely, such as renaming/uploading/deleting a video file etc.



Reliable & Standalone Design

AREC KS-2 is a standalone and stable media station that allows simply plugging in your existing digital camera and laptop content (1 or 2 video sources) to achieve live broadcasting and recording in extremely simple way.



Graphical User Interface and Extremely Easy-to-Use

KS-2 comes with a fully graphical user interface to minimize the learning curve required. A remote control allows for easy operation, including layout switching, video recording and live streaming etc. KS-2 also supports remotely control over RS-232 port.



AREC KS-2 Makes Sharing Live Moment with More Fun

Industries and Applications



Education
Lecture Capture
Video-On-Demand
Live Streaming
Distance Learning



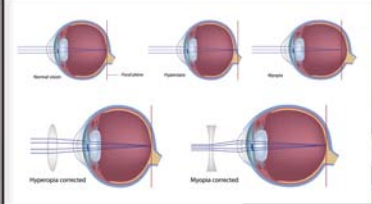

Enterprise
Live and On-Demand Training
Meeting Recording



Medical & Hospital
Surgic Training
Surgery Recording for Medical Seminars
Meeting Recording

- AREC Restricted -

Live and On-Demand Training



Public Speech



Live Sports Matches



Students Activities



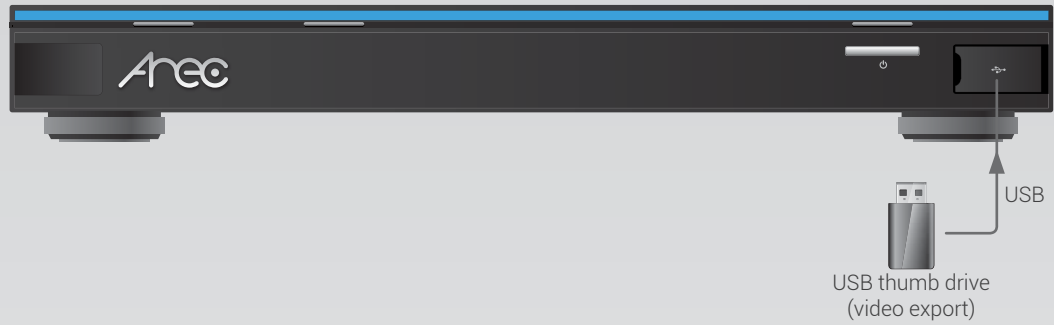


Lecture Capture

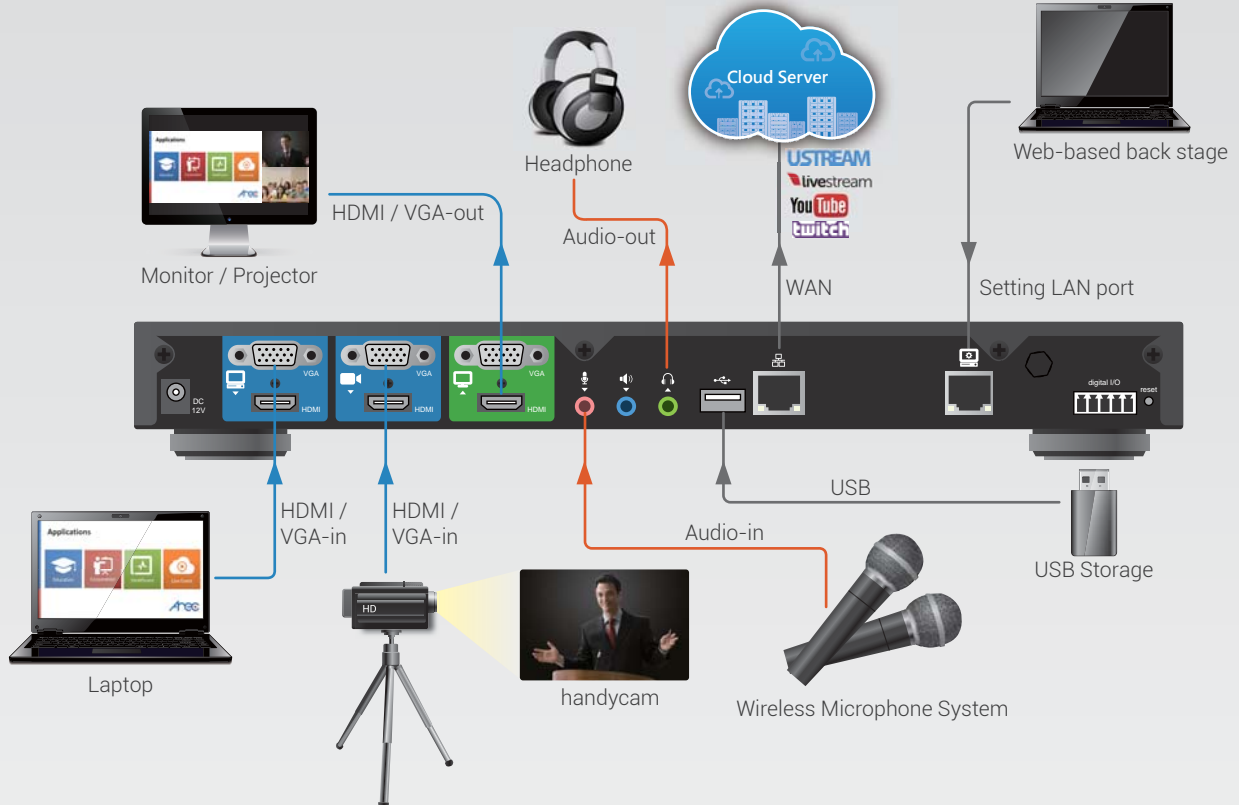
Cooking Shows

Connection Diagram- Interface Instruction

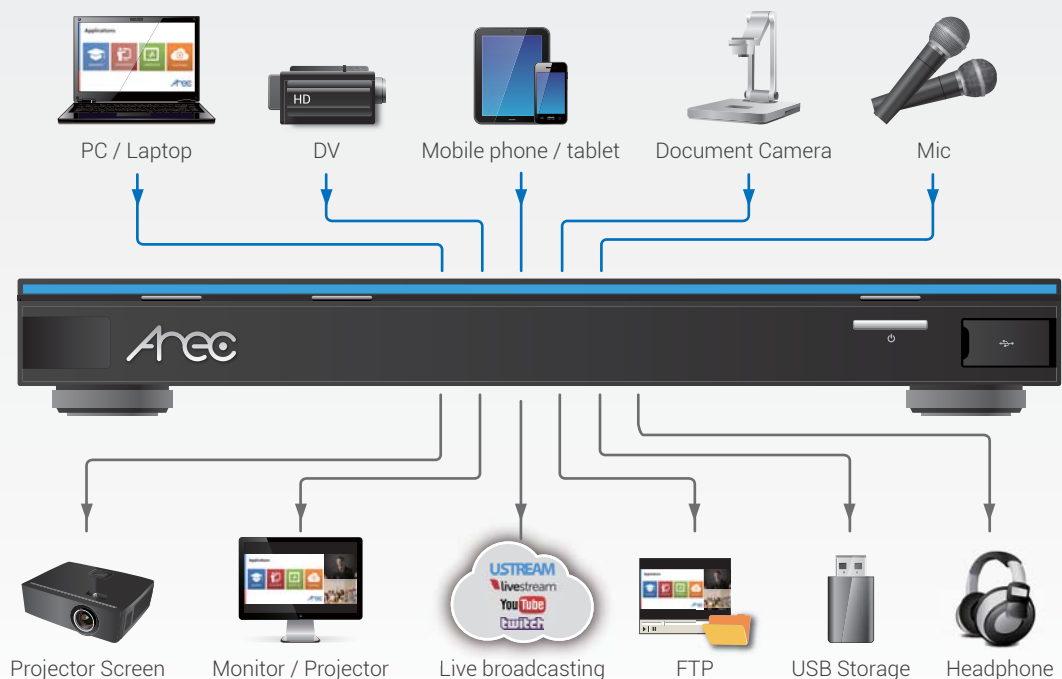
■ KS-2 Front View



■ KS-2 Back View



Connection Diagram- Input Terminals



Specifications	
Model Name	AREC KS-2 Media Station
Input Connection	
Video Inputs*	HDMI / VGA
Max. Video-In channels	Maximum 2 channel synchronized recording HDMI/VGA: 2 channels
Video-In Modes	HDMI: 480i ~ 1080p60 VGA Video: 480i ~ 1080p60 VGA PC: 640 x 480 ~ 1920 x 1080
Audio Inputs	Line in, Mic, HDMI
Max. Audio-In channels	3.5mm Stereo: 2 channels; HDMI: 2 channels
Video Processing	
Compression	H.264 / AVC
Frame Rate	Max. 30fps
Bit Rate	200Kbps~12Mbps
Resolution	Max. 1080p (320x240 ~ 1920x1080)
Audio Processing	
Compression	AAC-LC
Bit Rate	80Kbps~320Kbps
Storage Support	
External Storage	Support USB storage (Free bundle with SanDisk 32GB external USB flash drive)
Locally Stored File Output Format	MP4
Remote Storage	
FTP Backup	Video files will be backed up automatically to FTP server after end of recording. (Independent Design, there is no interruption while recording or playback.)
Streaming/Main System Output	
Streaming Delay	1 sec.
Streaming Format	Output: RTP, RTMP, UDP
Main Output Mode (Max.)	HDMI / VGA: 1080p60
Local Display	
Local Viewing Layout	9 layouts
Display Layout	Full screen / picture-in-picture / 2-channel split screen
Recording	
Recording Mode	MP4 format, mixed video recording / mixed video + original sources recording
Recording Layout	9 layouts
Auto Logo Insertion during Recording	Yes, through web-based back stage management setting
Video Information Adding	Video Information will be added on video file name automatically while file output or uploading
Live Broadcasting	
External Website Broadcasting	Yes, through the Internet
Playback	
Local File Playback	Yes
Operating Controls	
Remote Controller	Yes, included with the purchase
External Control	Yes, supports RS-232 interface port
Web-based Control Interface	Built-in administration and video management platform
General Information	
Operation System	Embedded Linux System
Power Supply	12V / 2A
Temperature / Humidity	0~50°C / 90%
Dimension	354mm(L) x 188.2mm(W) x 46mm(H)
Weight	1.32 kg (2.9 lbs)
Station Control	Web-based back stage, remote controller
Language	English / TC / SC
Accessories	Remote controller / power adapter / quick guide

* Supports DVI and component video cable inputs when using appropriate DVI to HDMI or component to VGA adaptors



AREC Inc., the professional solutions provider of audio/video lecture capture, offers comprehensive and self-development products with easy installation and simple integration features.

Based on IP networks and video streaming technologies, AREC focus on multi-signals capturing, recording, compressing, synchronizing, transcoding, streaming and distribution.

AREC's live and on-demand video solutions are used in a wide range of applications such as education, corporate training, medical education and meeting recording for organizations to meet specific needs.



Awarded "Business Opportunity Partner" by Institute for Information Industry

A Member of Taipei Computer Association

A Member of Taiwan Future Educational Research Association

AREC Inc. | www.arec.com | sales@arec.com
 Headquarters: Taipei, Taiwan Address: 3F, No. 367, Sec.2,
 Wenhua RD., Banqiao Dist., New Taipei City 220, Taiwan (R.O.C)
 TEL: +886-2-8259-5060



Exclusive Representative in Europe and CIS countries, along
 with Georgia & Tajikistan
 ADENA Limited | www.a-dena.com
 E-MAIL: anastasia@a-dena.com
 TEL: +886 2 8770 7725

AREC reserves the right to modify product specifications without prior notice.